



i-STAT®

TECHNICAL BULLETIN

NETWORK OPTIONS FOR UPDATING THE i-STAT® 1 HANDHELD

OVERVIEW

This Technical Bulletin has been created specifically to guide you through the process of updating the software on the i-STAT 1 handheld(s) using one of four network options:

1. using a Network Downloader and the JammLite process
2. using the Central Data Station (CDS) Version 5 Customization Workspace with a Serial or Network Downloader / Downloader/Recharger
3. using a Serial Downloader and the JammLite process for accounts with i-STAT/DE
4. using the Customization Workspace with i-STAT/DE and a Network Downloader or Downloader/Recharger

WHY DO i-STAT HANDHELDS NEED SOFTWARE UPDATES?

The i-STAT System is designed to eliminate operator influence on delivered results.

Due to continuous manufacturing process improvements to the i-STAT System, it is necessary to update standardization values from time to time to maintain long-term consistency of performance. These updates are equivalent to manually adjusting calibration on a traditional laboratory analyzer.

New CLEW software -- delivered twice a year on a CD-ROM -- re-establishes these standardization values and incorporates refinements to the internal quality monitoring system. New JAMS application software allows the i-STAT handheld to recognize any newly launched cartridge types and to perform any newly launched features.



1. UPDATE PROCEDURE USING A NETWORK DOWNLOADER AND THE JammLite PROCESS

1.1: Before starting the process, make sure all the required equipment / information is available:

- **Computer with:**
 - Windows 2000 or XP
 - A CD-ROM drive
- **i-STAT System Equipment**
 - (1) Network Downloader / Recharger

or

- (2) Network Downloader

Note: These instructions assume that the Network Downloader or Downloader / Recharger(s) used for the update process are already installed and in-use on the customer's network.

- (3) i-STAT 1 handheld
 - (4) The latest i-STAT Software and Documentation CD
 - (5) Electronic Simulator
- **List of the IP Address(es) for the network downloader(s) to be used for the software update process**

1.2: Ensure the i-STAT 1 handheld has enough battery power (7.5 Volts or higher).

To do this:

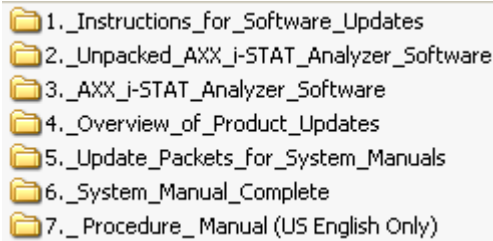
- Press the **On/Off** key
- Press the **Menu** key
- Press **1** for Analyzer Status
- Confirm the battery voltage. If the voltage is < 7.5 Volts:
 - replace the disposable batteries, or
 - if using rechargeable batteries, charge your handheld until it has at least 7.5 Volts.

1.3: Close all open programs on the computer including i-STAT Central Data Station (if applicable).

1.4: Before inserting the i-STAT 1 Software and Documentation CD, check that the JAMS application and CLEW match the Product Update.

1.5: Insert the Software and Documentation CD into the CD-ROM drive.

- If a window appears within 30 seconds, perform the following:



- Central Data Station (CDS) Version 5 Users: Double click 3._AXX_i-STAT_Analyzer_Software and then double click TRANSFER.BAT . Next, an additional window will open briefly, then close. Proceed to step 1.6.
 - All other users: proceed to step 1.7.
- If a window **does not** appear after inserting the Software update CD:
 - Double click the following icon



- Double click **CD-ROM Drive**



- Double click on **AXX_i-STAT_Analyzer_Software**
 3._AXX_i-STAT_Analyzer_Software
- Double click **TRANSFER.BAT**



Next, an additional window will open briefly, then close.

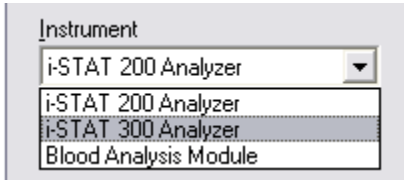
1.6: Close Windows Explorer by clicking on the in the upper right corner.

1.7: Double click **My Computer**. Double click **CD-ROM Drive**. Double click

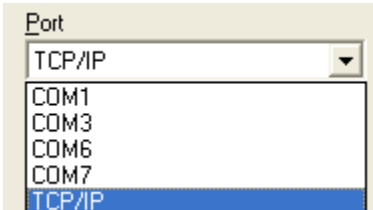
2._Unpacked_AXX_i-STAT_Analyzer_Software Double click JAMMLITE.EXE .

- If the JammLite program does not launch or you receive an error message, contact APOC Technical Support and tell the support specialist you are unable to complete step 1.7 of this document.

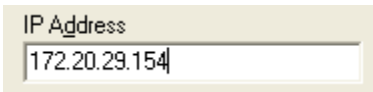
1.8: In the JammLite utility, select the **i-STAT 300 Analyzer** within the Instrument dropdown menu.



1.9: Select **TCP/IP** within the Port dropdown menu.



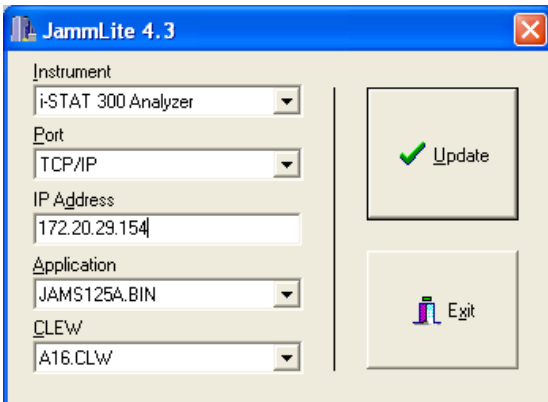
1.10: Type the IP Address of the Network Downloader being used for the software update in the **IP Address** box.



Note: the address used above is for example only.

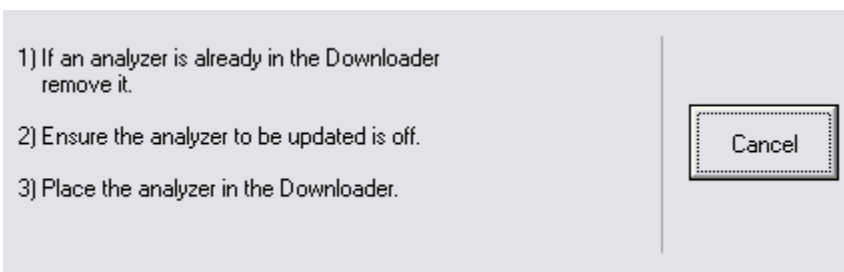
1.11: Check that the **Application** and **CLEW** listings match those in the Product Update.

Click the **Update** button.

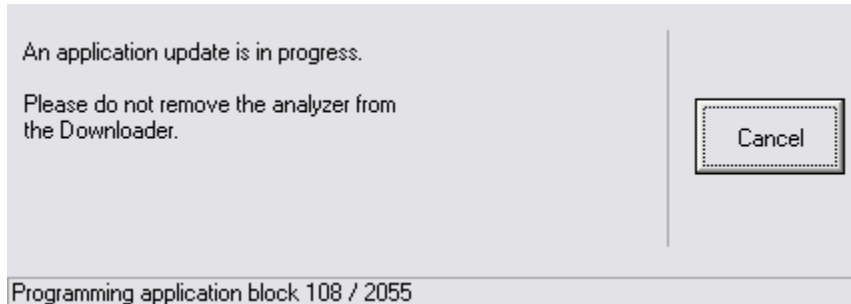


Note: Application and CLEW numbers are for example only.

1.12: Follow the onscreen instructions.

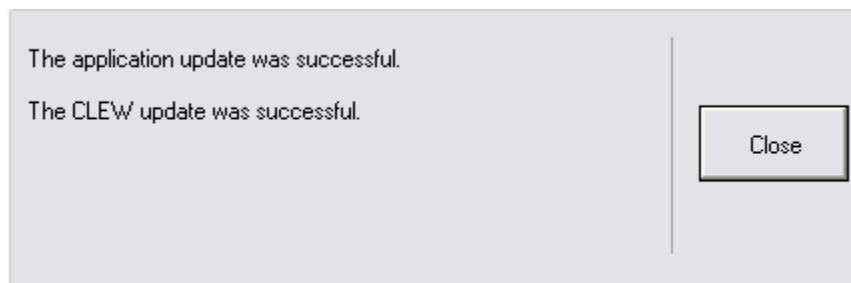


1.13: When the update is in progress, the following screen will appear:



The handheld will have 1's and 0's streaming across the screen signifying that it is receiving the software.

Do not move the handheld until the success screen is displayed.




1.14: Run the Electronic Simulator in the handheld. When the simulator finishes, PASS should be displayed.

Note: If PASS is not displayed, re-run the Electronic Simulator. If the repeated Electronic Simulator attempt fails, contact APOC Technical Support. For additional information on running the electronic simulator, see Section 14 of the i-STAT 1 System Manual.

Congratulations. The process for updating the first i-STAT 1 Handheld is complete.

Review the options below for additional instructions.

If there are no additional handhelds to update, the process is complete:

- Click the  button in the upper right corner of the software screen
- Close all other open boxes
- Confirm all messages

If there are additional handhelds to update via the same Network Downloader address:

- Click **Close**
- Click **Update**
- Repeat steps **1.11 through 1.14.**

If there are additional handhelds to update via a different Network Downloader address:

- Click **Close**
- Repeat steps **1.10 through 1.14.**

If your facility uses Central Data Station:

- Proceed to and perform step 2.7.

2. UPDATING THE i-STAT 1 HANDHELD USING THE CDS VERSION 5 CUSTOMIZATION WORKSPACE WITH A SERIAL OR NETWORK DOWNLOADER OR DOWNLOADER / RECHARGER

2.1: Before starting the process, make sure all the required equipment / information is available:

- **Computer with CDS Version 5 application**
- **i-STAT System Equipment**
 - (1) i-STAT 1 handheld
 - (2) Serial or Network Downloader or Downloader / Recharger
 - (3) The latest i-STAT Software and Documentation CD
 - (4) Electronic Simulator

2.2: Ensure the i-STAT 1 handheld has enough battery power (7.5 Volts or higher).

To do this:

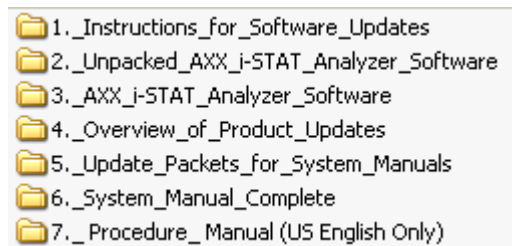
- Press the **On/Off** key
- Press the **Menu** key
- Press **1** for Analyzer Status
- Confirm the battery voltage. If the voltage is < 7.5 Volts:
 - replace the disposable batteries, or
 - if using rechargeable batteries, charge your handheld until it has at least 7.5 Volts.

2.3: Close all open programs on the computer including i-STAT Central Data Station.

2.4: Before inserting the i-STAT Software and Documentation CD, check that the JAMS application and CLEW match the Product Update.

2.5: Insert the Software and Documentation CD into the CD-ROM drive.

- If a window appears within 30 seconds, perform the following:



- Double click 3. _AXX_i-STAT_Analyzer_Software and then double click TRANSFER.BAT. Next, an additional window will open briefly, then close. Proceed to step 2.6.

- If a window **does not** appear after inserting the Software update CD:


- Double click the following icon:



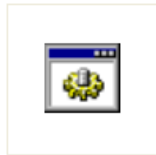
- Double click **CD-ROM Drive**



- Double click on **AXX_i-STAT_Analyzer_Software**

 3._AXX_i-STAT_Analyzer_Software

- Double click **TRANSFER.BAT**



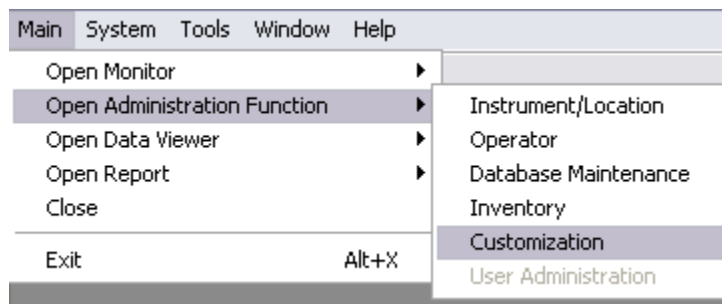
TRANSFER.BAT

Next, an additional window will open briefly, then close.

2.6: Close Windows Explorer by clicking on the  in the upper right corner.

2.7: Update the CLEW and JAMS versions in the CDS Customization Workspace:

- Open the Central Data Station application.
- Click on **Main** → **Open Administration Function** → **Customization**



A Password box will then appear.



- Type in the Password and press Enter. The default password is **istat**.

Note: If you are unable to open CDS Customization, please contact APOC Technical Support and indicate that your CDS Customization Password is unknown.

- If the **Enable Customization** box is not already checked, click the box next to this listing.
- Under the “Location-based customization profile:” section, make sure **Enable Updates** is checked for every location from which you wish to perform software updates on your i-STAT 1 Handhelds.
- Under the “Default customization profile:” column, double click on the “**i-STAT Analyzer CLEW**” button.

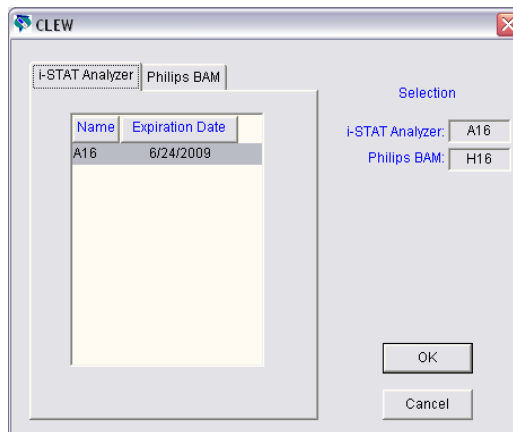
- The latest CLEW should be displayed in the CLEW window. Select the new version of **CLEW** and click **OK**.

Click **Yes** for the confirmation message.

- If “Use Default Profile” is not checked beside any location-based customization profile: double click the box under the “**i-STAT Analyzer CLEW**” column.

Location-based customization profiles:							
Location	Enable Updates	Use Default Profile	Update CLEW	i-STAT Analyzer CLEW	Philips BAM CLEW	Preferences	STATNotes
A_1	<input checked="" type="checkbox"/>	<input type="checkbox"/>	<input checked="" type="checkbox"/>	A16	H16	DEFAULT0	CHART0

- Click the new version of **CLEW**, and then click **OK**.



Click **Yes** for the confirmation message.

- Underneath the “Default customization profile:” column:
 - Double click on the “**i-STAT 1 Software:**” button
 - Select the JAMS version that matches the Product Update
 - Click **OK**.

2.8: Update the software in the i-STAT 1 handheld

- Go to the location where the i-STAT 1 handheld you wish to update are located or contact someone at that location who can assist in updating the handheld(s).
- Press the **On/Off** button on the handheld.
- Press the **Menu** key to bring up the Administration Menu.
- Press **7 – Utility**. When prompted for a password, press **ENT**. If that did not work, a password is needed. Enter the password defined by your facility and press **ENT**.
- From the Utility menu, press **3 – Receive Software**. A “Waiting to Send” message will appear on the handheld display.
- Place the handheld in the Downloader or Downloader/Recharger. **Do NOT move the handheld until step 2.9.** A **Communication in Progress** message will appear on the screen. After this disappears, the handheld display will stay blank for approximately 5-10 seconds.
- The handheld will then display 1’s and 0’s streaming across the screen signifying that it is receiving the software. Once the 1’s and 0’s disappear, the handheld display will again go blank for approximately 5-10 seconds.
- A **Waiting to Send** message following by a **Communication in Progress** message will then appear on the handheld display. After these messages disappear, the handheld display will go blank, and the update process is complete.

2.9: Run the Electronic Simulator in the handheld.

When the simulator finishes, PASS should be displayed.

Note: If PASS is not displayed, re-run the Electronic Simulator. If the repeated Electronic Simulator attempt fails, contact APOC Technical Support. For additional information on running the electronic simulator, see Section 14 of the i-STAT 1 System Manual.

***Congratulations.* The process for updating the first i-STAT 1 handheld is complete.**

Review the options below for additional instructions.

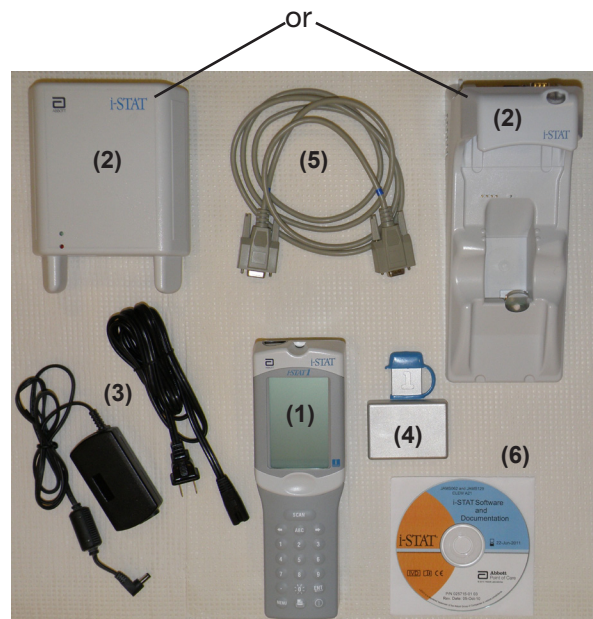
- If there are no additional handhelds to update, the process is complete:
- If there are additional handhelds to update, return to step 2.8.

3. UPDATING THE i-STAT 1 HANDHELD USING A SERIAL DOWNLOADER AND THE JammLite PROCESS FOR ACCOUNTS WITH i-STAT/DE

3.1: Before starting the process, make sure all the necessary required equipment is available:

- Computer with:
 - Windows 2000 or Windows XP
 - A 9 pin-serial port
 - A CD-ROM drive.
- i-STAT System Equipment

- (1) i-STAT 1 handheld
- (2) Serial Downloader or Serial Downloader / Recharger
- (3) Downloader power supply
- (4) Electronic Simulator
- (5) 9-pin null modem serial cable supplied with the downloader
- (6) The latest i-STAT Software and Documentation CD



3.2: Ensure the i-STAT 1 handheld has enough battery power (7.5 Volts or higher).

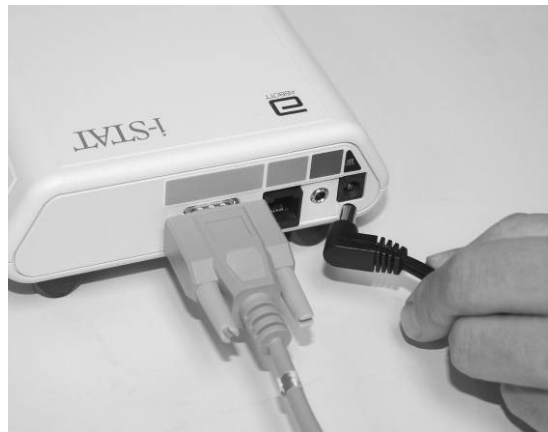
To do this:

- Press the **On/Off** key
- Press the **Menu** key
- Press **1** for Analyzer Status
- Confirm the battery voltage. If the voltage is < 7.5 Volts:
 - replace the disposable batteries, or
 - if using rechargeable batteries, charge your handheld until it has at least 7.5 Volts.

3.3: Connect the i-STAT 1 Serial Downloader or the Serial Downloader/Recharger to the 9-pin serial port on the back of the computer with the 9-pin null modem serial cable as shown.



3.4: Connect the power supply to the i-STAT 1 Serial Downloader or Serial Downloader/Recharger and then to a wall outlet or power strip.



3.5: Close all open programs on the computer.

3.6: Before inserting the i-STAT Software and Documentation CD, check that the JAMS application and CLEW match the Product Update.

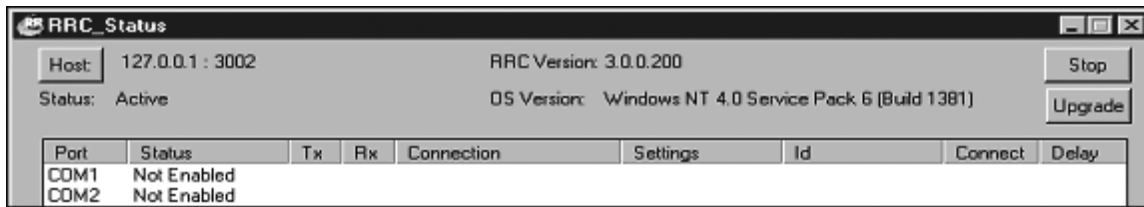
Customers using i-STAT/DE with RALS-Plus should proceed to Step 3.7. Customers using i-STAT/DE with other data management systems may proceed directly to step 3.8.

3.7: If using RALS Plus, disable the RALS remote connections.

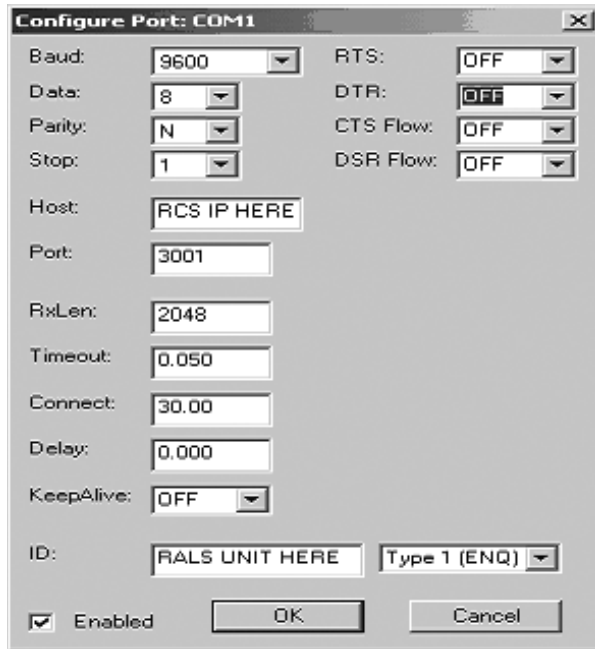
- Right click on the red RRC dot in the lower right corner of the display next to the clock and go to “Administrator Settings”.
- Enter the RRC Password of the Day. Call 877-627-7257 to obtain the password, or go to http://www.medicalautomation.com/RRC_Password.htm and type “richmond” as the key code.



- Double click on “**COM1**”.



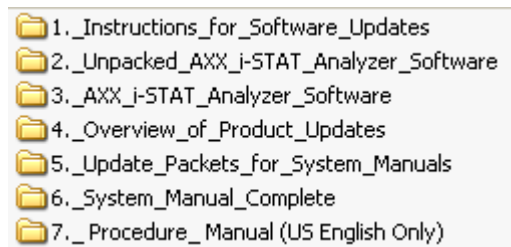
- Record “**Host**” and “**ID**” entry.
- Uncheck the “**Enabled**” box. Click **OK**.



- If not enabled, skip to step **3.8**.
- Minimize the RRC Status window.

3.8: Insert the Software and Documentation CD into the CD-ROM drive on the computer being used for the update.

- If a window appears within 30 seconds, perform the following:



- Double click 3._AXX_i-STAT_Analyzer_Software and then double click TRANSFER.BAT. Next, an additional window will open briefly, then close. Proceed to step **3.9**.

- If a window **does not** appear after inserting the Software update CD:

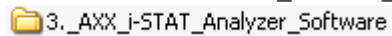
- Double click the following icon:



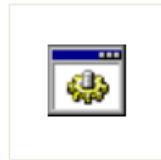
- Double click **CD-ROM Drive**



- Double click on **AXX_i-STAT_Analyzer_Software**



- Double click **TRANSFER.BAT**

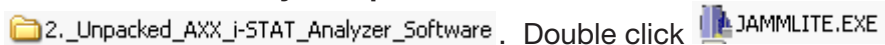


TRANSFER.BAT

Next, an additional window will open briefly, then close.

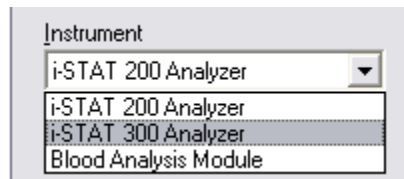
3.9: Close Windows Explorer by clicking on the  in the upper right corner.

3.10: Double click My Computer. Double click CD-ROM Drive. Double click

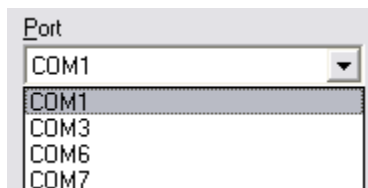


- If the JammLite program does not launch or you receive an error message, contact APOC Technical Support and tell the support specialist you are unable to complete step **3.10** of this document.

3.11: In the JammLite utility, select the i-STAT 300 Analyzer within the Instrument dropdown menu.



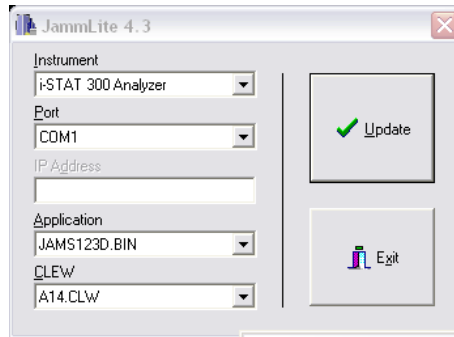
3.12: Make sure there is at least one port number listed under the Port Drop-Down List



Note: If the Port drop-down list says “None”, make certain the connection from the Serial Downloader to the computer is tight. Then reboot the computer and return to step **3.5**.

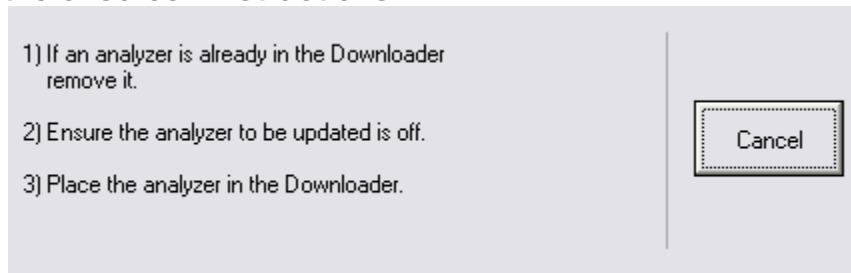
3.13: Check that the Application and CLEW listings match those in the Product Update for the current software release. If the update is for CLEW only, select **None** for Application.

3.14: Click on the “Update” button.

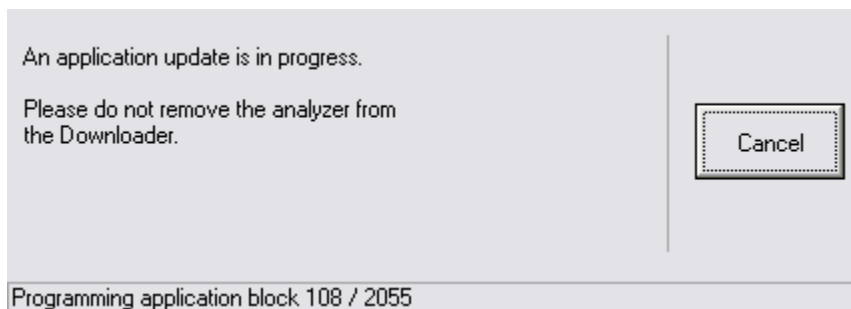


Note: Application and CLEW numbers are for example only.

3.15: Follow the onscreen instructions.

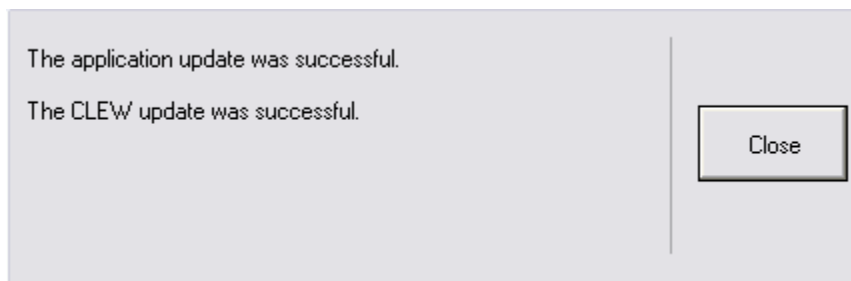


3.16: When the update is in progress, the following screen will appear:



The handheld will have 1’s and 0’s streaming across the screen signifying that it is receiving the software.

Do not move the handheld until the success screen is displayed.




3.17: Run the Electronic Simulator in the handheld. When the simulator finishes, PASS should be displayed.

Note: If PASS is not displayed, re-run the Electronic Simulator. If the repeated Electronic Simulator attempt fails, contact APOC Technical Support. For additional information on running the electronic simulator, see Section 14 of the i-STAT 1 System Manual.

Congratulations. The process for updating the first i-STAT 1 handheld is complete.

If there are no additional handhelds to update, the process is complete:

- Click the  button in the upper right corner of the software screen
- Close all open boxes
- Confirm all messages

If there are additional handhelds to be updated via JammLite:

- Click **Close**
- Repeat steps **3.14 through 3.17**.



RALS-Plus customers who disabled the RRC connection in Step 3.7 should proceed to step 3.18.

RALS-Plus customers who did not need to disable the RRC connection in step 3.7 and customers using i-STAT/DE with other data management systems may proceed directly to step 3.19.

3.18: Restart the RALS remote connection.

- Maximize the RRC Status window.
- Double click on Com1.
- Check the “Enabled” box.
- Enter the recorded “Host” and “ID” entry from step **3.7**.
- Click “OK”.

3.19: Update the CLEW version in the Customization Workspace:

- Transfer the files
 - All users must transfer the updated CLEW files to the DE Server in order for them to be available in the Customization Workspace.
 - Access the main Customization Workspace page.
 - Click **Update i-STAT/DE** → **Upload Update File**
 - Insert the i-STAT Software and Documentation CD-ROM into the CD-ROM drive of the computer you are using. (Note: this computer does **not** need to be the i-STAT/DE Server.)
 - Browse to  3._AXX_i-STAT_Analyzer_Software , click on  SUXXXXXX.exe , and click **Upload**. (Note: the XXXXXX is the JAMS and CLEW version that you are updating.) Immediately after uploading the CLEW/JAMS to the i-STAT/DE server, i-STAT/DE will unpack the files and make them available for use in the handheld’s Customization Workspace.
- In the Customization Workspace, under the “Default customization profile:” column, click on the “**i-STAT Analyzer CLEW**” button.

Note: Customization screens may vary depending upon the i-STAT/DE version in use.

Default customization profile:

Language: English

Unit Set: UNITSET00

i-STAT Analyzer CLEW: A16

Philips BAM CLEW: [None]

i-STAT 1 Software: JAMS125A.BIN

Preferences: DEFAULT0

STATNotes: CHART0

Use Operator List

- Check the box next to the new version of **CLEW** and click **OK**.

Institution: Inst1

Location: Default customization profile

OK

Cancel

i-STAT Analyzer CLEW:

Selected CLEW	Name	Expiration Date
<input checked="" type="checkbox"/>	A16	6/24/2009 8:00:00 AM

Answer OK to the question that appears.

- If “Uses Default” is not checked beside any Location-based customization profile: click the box under the “**i-STAT Analyzer CLEW**” column.

Location-based customization profiles:

Location	Enabled	Uses Default	Update CLEW	i-STAT Analyzer CLEW	Philips BAM CLEW	Preferences	STATNotes	<input type="checkbox"/>
ER	<input type="checkbox"/>	<input checked="" type="checkbox"/>	<input checked="" type="checkbox"/>	A16	[None]	DEFAULT0	CHART0	<input type="checkbox"/>
ICU	<input type="checkbox"/>	<input type="checkbox"/>	<input checked="" type="checkbox"/>	A16	[None]	DEFAULT0	CHART0	<input type="checkbox"/>
Lab	<input type="checkbox"/>	<input checked="" type="checkbox"/>	<input checked="" type="checkbox"/>	A16	[None]	DEFAULT0	CHART0	<input type="checkbox"/>
OR	<input type="checkbox"/>	<input type="checkbox"/>	<input checked="" type="checkbox"/>	A16	[None]	DEFAULT0	CHART0	<input type="checkbox"/>

- Click the new version of **CLEW**, and then click **OK**.

Institution: Inst1

Location: Default customization profile

OK

Cancel

i-STAT Analyzer CLEW:

Selected CLEW	Name	Expiration Date
<input checked="" type="checkbox"/>	A16	6/24/2009 8:00:00 AM

Answer OK to the question that appears.

- Under the “Default Customization profile:” column, click on the **i-STAT 1 Software** drop-down list. Select the JAMS version that matches the Product Update and click **OK**.

Default customization profile:

Language: English

Unit Set: UNITSET00

i-STAT Analyzer CLEW: A16

Philips BAM CLEW: [None]

i-STAT 1 Software: JAMS125A.BIN

Preferences: DEFAULT0

STATNotes: CHART0

Use Operator List

4. UPDATING THE i-STAT 1 HANDHELD USING THE CUSTOMIZATION WORKSPACE WITH i-STAT/DE AND A NETWORK DOWNLOADER OR DOWNLOADER/RECHARGER

4.1: Before starting the process, make sure all the required equipment / information is available:

- **Computer which can access the Customization Workspace**
- **i-STAT/DE Server**
- **i-STAT System Equipment**
 - (1) i-STAT 1 handheld
 - (2) Network Downloader
 - (3) The latest i-STAT Software and Documentation CD
 - (4) Electronic Simulator



4.2: Ensure the i-STAT 1 handheld has enough battery power (7.5 Volts or higher).

To do this:

- Press the **On/Off** key
- Press the **Menu** key
- Press **1** for Analyzer Status
- Confirm the battery voltage. If the voltage is < 7.5 Volts:
 - replace the disposable batteries, or
 - if using rechargeable batteries, charge your handheld until it has at least 7.5 Volts.

4.3: Before inserting the i-STAT Software and Documentation CD, check that the JAMS application and CLEW match the Product Update.

4.4: Update the CLEW and JAMS versions in the Customization Workspace

- Transfer the files
 - All users must transfer the updated CLEW files to the DE Server in order for them to be available in the Customization Workspace.
 - Access the main Customization Workspace page.
 - Click **Update i-STAT/DE** → **Upload Update File**
 - Insert the i-STAT Software and Documentation CD-ROM into the CD-ROM drive of the computer you are using. (Note: this computer does **not** need to be the i-STAT/DE Server.)
 - Browse to  3._AXX_i-STAT_Analyzer_Software , click on  SUXXXXXX.exe , and click **Upload**. (Note: the XXXXXX is the JAMS and CLEW version that you are updating.) Immediately after uploading the CLEW/JAMS to the i-STAT/DE server, i-STAT/DE will unpack the files and make them available for use in the handheld's Customization Workspace.

4.5: Close Windows Explorer by clicking on the in the upper right corner.

4.6: Access the Customization Workspace

- RALS-Plus Users:
 - From the RALS-Plus Application, pick i-STAT from the drop-down menu.
 - Click on **Device Customization**
- PrecisionWeb Users:
 - Double click on the desktop shortcut or Internet Explorer Favorites for **i-STAT Customization**.

4.7: Update the CLEW and JAMS versions in the Customization Workspace:

- Under the “Default customization profile:” column, click on the “**i-STAT Analyzer CLEW**” button.

Note: Customization screens may vary depending upon i-STAT/DE version in use.

Default customization profile:

Language:
English

Unit Set:
UNITSET00

i-STAT Analyzer CLEW:
A16

Philips BAM CLEW:
[None]

i-STAT 1 Software:
JAMS125A.BIN

Preferences:
DEFAULT0

STATnotes:
CHART0

Use Operator List

- Check the box next to the new version of **CLEW** and click **OK**.

Institution: Inst1
Location: Default customization profile

OK
Cancel

i-STAT Analyzer CLEW:

Selected CLEW	Name	Expiration Date
<input checked="" type="checkbox"/>	A16	6/24/2009 8:00:00 AM

Answer OK to the question that appears.

- If “Uses Default” is not checked beside any Location-based customization profile: click the box under the “**i-STAT Analyzer CLEW**” column.

Location-based customization profiles:

Location	Enabled	Uses Default	Update CLEW	i-STAT Analyzer CLEW	Philips BAM CLEW	Preferences	STATnotes	<input type="checkbox"/>
ER	<input type="checkbox"/>	<input checked="" type="checkbox"/>	<input checked="" type="checkbox"/>	A16	[None]	DEFAULT0	CHART0	<input type="checkbox"/>
ICU	<input type="checkbox"/>	<input type="checkbox"/>	<input checked="" type="checkbox"/>	A16	[None]	DEFAULT0	CHART0	<input type="checkbox"/>
Lab	<input type="checkbox"/>	<input checked="" type="checkbox"/>	<input checked="" type="checkbox"/>	A16	[None]	DEFAULT0	CHART0	<input type="checkbox"/>
OR	<input type="checkbox"/>	<input type="checkbox"/>	<input checked="" type="checkbox"/>	A16	[None]	DEFAULT0	CHART0	<input type="checkbox"/>

- Click the new version of **CLEW**, and then click **OK**.

Institution: Inst1
Location: Default customization profile

OK
Cancel

i-STAT Analyzer CLEW:

Selected CLEW	Name	Expiration Date
<input checked="" type="checkbox"/>	A16	6/24/2009 8:00:00 AM

Answer OK to the question that appears.

- Under the “Default Customization profile:” column, click on the **i-STAT 1 Software** drop-down list. Select the JAMS version that matches the Product Update and click **OK**.

Default customization profile:

Language: English

Unit Set: UNITSET00

i-STAT Analyzer CLEW: A16

Philips BAM CLEW: [None]

i-STAT 1 Software: JAMS125A.BIN

Preferences: DEFAULT0

STATNotes: CHART0

Use Operator List

4.8: Enable Customization

- If the **Enable Customization** box is not already checked, click the box next to this listing.
- Under the “Location-based customization profile:” section, make sure **Enabled** is checked for every location from which you wish to perform software updates on your i-STAT 1 handhelds.

4.9: Update the software in the i-STAT 1 handheld

- Go to the location where the i-STAT 1 handheld(s) you wish to update are located or contact someone at that location who can assist in updating the handheld(s).
- Press the **On/Off** button on the handheld.
- Press the **Menu** key to bring up the Administration Menu.
- Press **7 – Utility**. When prompted for a password, press **ENT**. If that did not work, a password is needed. Enter the password defined by your facility and press **ENT**.
- From the Utility menu, press **3 – Receive Software**. A “Waiting to Send” message will appear on the handheld display.
- Place the handheld in the downloader or downloader / recharger. **Do NOT move the handheld until step 4.10**. A **Communication in Progress** message will appear on the screen. After this disappears, the handheld display will stay blank for approximately 5-10 seconds.
- The handheld will then display 1’s and 0’s streaming across the screen signifying that it is receiving the software. Once the 1’s and 0’s disappear, the handheld display will again go blank for approximately 5-10 seconds.
- A **Waiting to Send** message following by a **Communication in Progress** message will then appear on the handheld display. After these messages disappear, the handheld display will go blank, and the update process is complete.

4.10: Run the Electronic Simulator in the handheld. When the simulator finishes, PASS should be displayed.

Note: If PASS is not displayed, re-run the Electronic Simulator. If the repeated Electronic Simulator attempt fails, contact APOC Technical Support. For additional information on running the electronic simulator, see Section 14 of the i-STAT 1 System Manual.

***Congratulations.* The process for updating the first
i-STAT 1 handheld is complete.**

Review the options below for additional instructions.

- If there are no additional handhelds to update, the process is complete:
- If there are additional handhelds to update, return to step **4.9**.

